



DESIGN PROJECT

BRACELET

"CRYSTAL ROSE PATINA HEART"

DESIGN PROJECT

BRACELET "CRYSTAL ROSE PATINA HEART"



Swarovski crystals

Article	Product Group	Article No.	Amount	Size	Color	Color Code
	Beads	5328	18 pcs.	4 mm	Crystal Rose Gold 2x	ROGL2
	Pendants	6228	1 pc.	10.3x10mm	Crystal Rose Patina	ROSPA
	Pendants	6228	1 pc.	14.4x14 mm	Crystal Rose Patina	ROSPA

Supplies & Tools

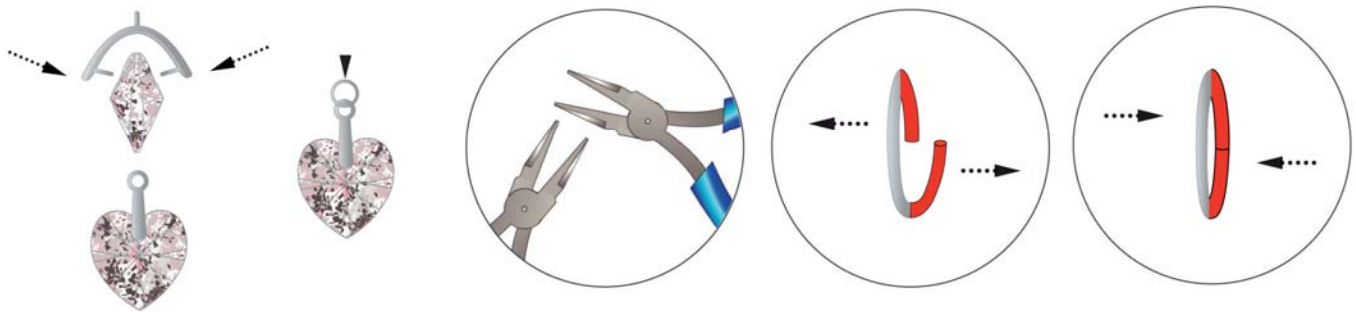
- Supplies**
- Chain, silver, 13 cm
 - 2x Crimping beads, silver
 - Extension chain, silver, 4 cm
 - 2x Jump rings, silver, 3 mm
 - 3x Jump rings, silver, 4 mm
 - 1x Jump ring, silver, 6 mm
 - 1x Lobster clasp, silver
 - 1x Pinch bail, silver
 - 1x Split ring, silver, 5 mm
 - Tigertail, silver, Ø 0.30 mm, 32 cm

- Tools**
- Crimping pliers
 - Flat nose pliers
 - Ruler
 - Side cutter

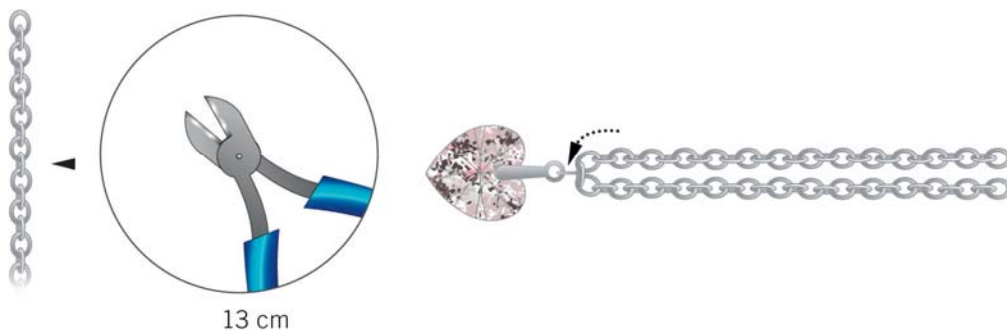
Level of design: **BEGINNER**

Have also a look at the **text instructions** at the last page!

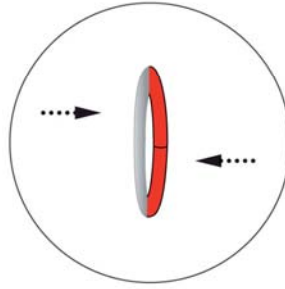
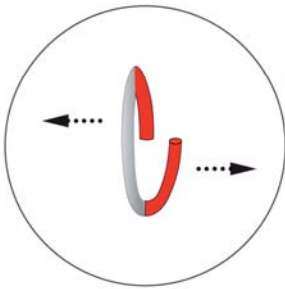
STEP 1



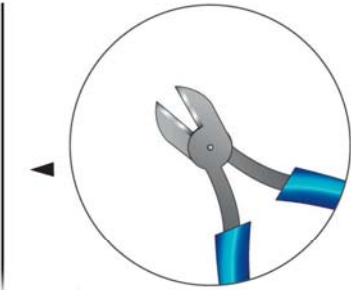
STEP 2



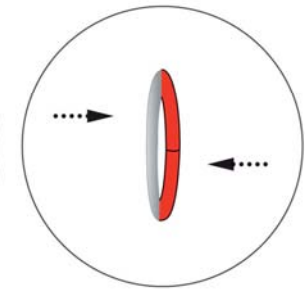
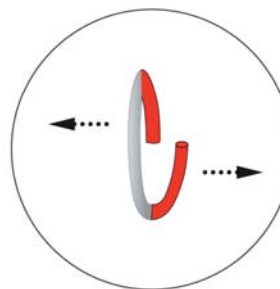
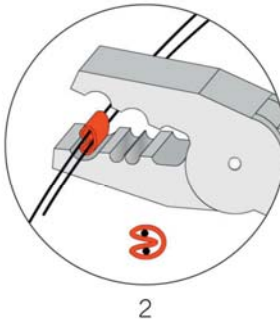
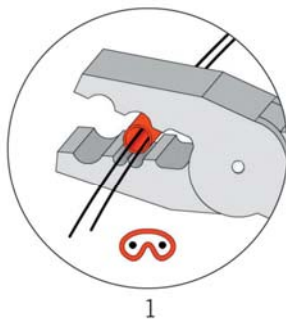
STEP 3



STEP 4



32 cm



DESIGN PROJECT BRACELET "CRYSTAL ROSE PATINA HEART"



- STEP 1: Insert Swarovski Pendant art. 6228 14.4x14 mm Crystal Rose Patina onto a pinch bail and attach a 4mm jump ring to it.
- STEP 2: Insert a 13 cm long chain through the jump ring from previous step and position it half on each side
- STEP 3: Attach a lobster clasp to the two open ends of the chain with the help of a 3 and 4 mm jump ring.
- STEP 4: Cut 32 cm tiger tail and insert 18 Swarovski Bead art. 5328 4 mm Crystal Rose Gold 2x onto it. Slide one end of the tiger tail through a crimp bead and then through the loop of the pinch bail and back through the crimp bead and 3 of the Swarovski beads. Crimp the crimp bead and cut off the extra tiger tail.

Similarly at the other end connect the 4 cm extension chain to the split ring with the help of a 4 mm jump ring. Now insert the other end of the tiger tail through a crimping bead and then through the split ring we just connected and then again back through the crimp bead and 3 Swarovski Beads. Crimp the crimp bead and cut off the extra tiger tail. Attach the Swarovski Pendant art. 6228 10.3x10 mm Crystal Rose Patina to the extension chain with the help of a 6 mm jump ring.